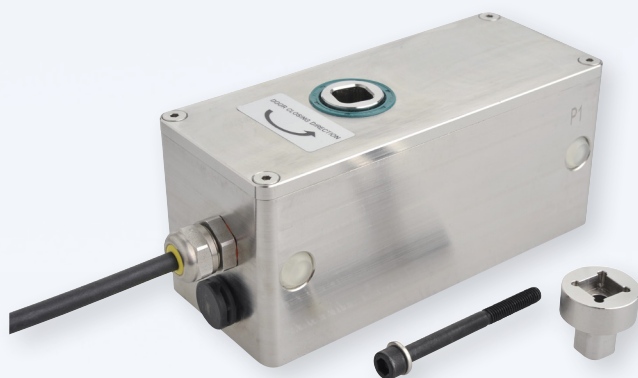


ELECTROMECHANICAL DOOR CLOSER BRAKE

hdFLEXBRAKE^{MODBUS}

Art. No. 102500.1



HD-FlexBrake has been designed to use with existing mechanical door closers. With HD-FlexBrake electromechanical stopping of doors at a user-defined door angle can be realised. Fire protection requirements can be covered with this product.

- » Electromechanical door stopper with feedback
- » Feedback of door state „open“, „closed“
- » High robustness
- » Emergency opening in case of voltage breakdown
- » Modbus-compatibility
- » High protection class and seawater resistant

The product can be controlled via static signals or serially by Modbus protocol with application of device addresses.

The desired door holding angle can be programmed with a programming unit, and can be changed if required.

HD-FlexBrake is mounted above the existing mechanical door closer using a screw. When mounting HD-FlexBrake the rotational direction between the brake and the mechanical door closer has to be considered.

Request our technical manual to receive more detailed information about HD-FlexBrake.

Technical modifications and errors excepted.

bss
Security
through Innovation



PROPERTIES



SUPERYACHTS



MACHINERY & PLANTS



TRANSPORT & SECURE STORAGE



PARTNERING WITH:

SIEMENS **LÜRSSEN**

UTC Fire & Security **GIRA** **ABB**

ABI
Sicherheitsysteme

B.
Berker

ELECTROMECHANICAL DOOR CLOSER BRAKE

hdFLEXBRAKE^{MODBUS}

Art. No. 102500.1



Product details:

- » Operation Voltage Range: 14 to 30 V DC
- » Standby power consumption: < 20 mA
- » Current Opening / Closing:
max. 100 mA / 24 V
- » Input current supply to activate the input:
0.2 mA
- » Minimum pulse length for the inputs:
20 msec
- » Output-current: 120 mA
- » Mechanical dimensions (WxHxD):
approx. 150 x 67 x 62 mm
- » Closing / Opening time: < 3 sec
- » Holding torque: approx. 60 Nm
- » Operating temp. / Storage temp.:
+5°C to +60° C / -20°C to +70° C
- » Protection Class: IP 64
- » Weight: approx. 2.6 kg
- » Cable length: 1.90 m
- » Material of housing: Stainless Steel 1.4404
- » Mechanical compatibility:
Dorma Door Closer System TS 93 and
design equal solutions

Accessories:

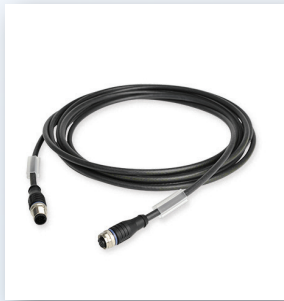
- » 102900.2 - Programming Unit HD-FlexBrake / HD-Lock
- » 102910.0 - Connecting Cable, 12-pole, M12 socket
- » 102910.1 - Connecting Cable, 12-pole, M12 socket and M12 plug



102900.2



102910.0



102910.1

PROPERTIES - SUPER YACHTS -
MACHINERY & PLANTS - TRANSPORT & SECURE STORAGE

BSS Baumann
Sicherheitssysteme GmbH
Robert-Bosch-Straße 1A
78234 Engen, Germany

P: +49 (0) 7733 99494-20
F: +49 (0) 7733 99494-21
www.bss-sdi.com
info@bss-sdi.com



Technical modifications and errors excepted.

bss
Security
through Innovation



PARTNERING WITH:

