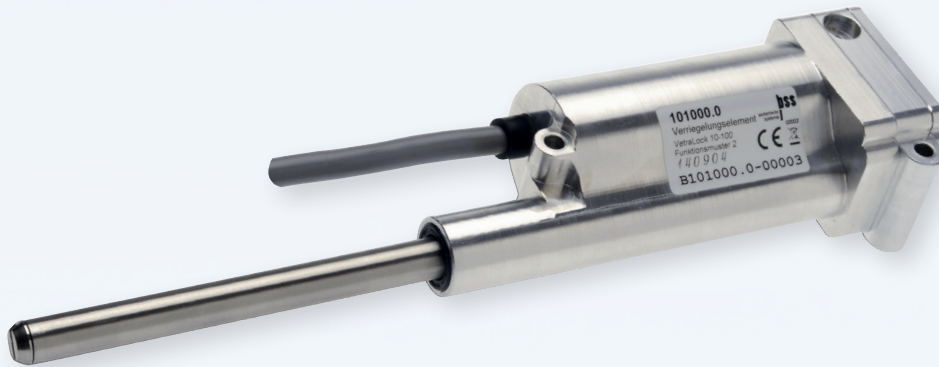


ELECTROMECHANICAL LOCKING DEVICE

vetraLock

Art. No. 101000.0



Security applications with high requirements
can be covered with this product.

- » 100 mm bolt length (adjustable)
- » Low maintenance requirement
- » Robust and compact aluminium housing

VetraLock 10-100 guarantees reliable and robust locking. It provides low maintenance and has an emergency opening function.

The device is used in vehicles, containers, trailers and gates. VetraLock 10-100 offers a stainless steel bolt with a diameter of 10 mm and a potential bolt length of 100 mm. It can be applied where high security standards need to be fulfilled.

By using a hall encoder, the locking distance can be adjusted from 0 up to 100 mm as desired. Therefore, existing installation requirements can be met easily.

High resistance against mechanical loads through an aluminium housing and a solid method of construction are further positive features of the device.

bss

Security
by Innovation



GEBÄUDE & OBJEKTE



ANLAGEN & MASCHINEN



TRANSPORT & WERTBEHÄLTNISSE



PARTNERING WITH:

SIEMENS ABB

UTC Fire & Security
A United Technologies Company

GIRA

ABI
Automated Building Intelligence

B.
Berker

ELECTROMECHANICAL LOCKING DEVICE

vetraLOCK

Art. No.101000.0



Produktdaten:

- » Housing Material: Aluminium
- » Housing Dimensions (L x W x H):
135 x 56.5 x 36.5 mm
- » Mounting: Thread 3 * M6, 10 mm deep
- » Bolt Material: Stainless steel
- » Bolt Diameter: 10 mm
- » Bolt locking length: 100 mm
- » Bolt Extension: Thread M8, 6 mm deep
- » Bolt Emergency Opening: Slot 1.2 * 6 mm
- » Bolt Locking speed (@10N):
approx. 43 mm/sec
- » Bolt Locking speed (neutral):
approx. 58 mm/sec
- » Start-up power without load:
approx. 3.3 [A] @ 12V
- » Power without load: approx. 0.5 [A] @ 12V
- » Power @10N: approx. 0.9 [A] @ 12V
- » Power @25N: approx. 1.2 [A] @ 12V
- » Power @70N: approx. 2.5 [A] @ 12V
- » Cable Type: Helu Tronic LiYY 6 * 0.34 mm²
- » Cable Connecting: 6 * flex, 0.34 mm²
- » Cable length: 300 mm
- » Motor connection: 2 * flex
- » Encoder connection: 4 * flex
- » Power consumption without load: 5 mA

FACILITIES - MACHINERY & PLANTS - TRANSPORT & SECURE STORAGE

BSS Baumann
Sicherheitssysteme GmbH
Stockacher Straße 30
78315 Radolfzell, Germany

Tel.: +49 (0) 7732 98279-0
Fax: +49 (0) 7732 98279-10
www.bss-sdi.com
info@bss-sdi.com



PARTNERING WITH:

